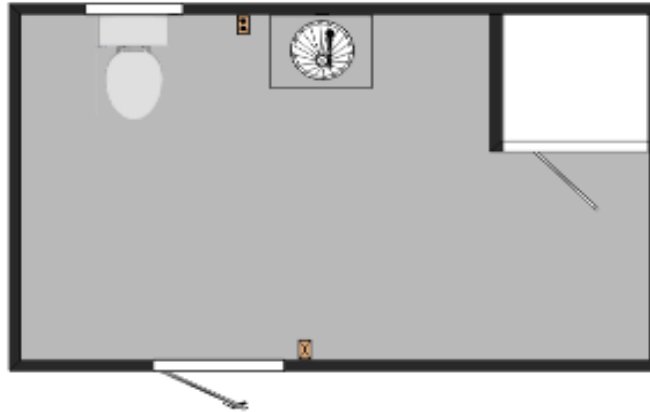




Transportable Buildings

CHRIS AND JODY GRANT

Bathroom/Laundry Room 4m x 2.4m



Inclusions:

- Skillion roof with gutter
- Water proof cement sheet flooring throughout
- 1 x solid wooden personal door
- 1 x glass sliding window
- Insulation and lining
- Toilet and cistern
- 1 x stainless steel hand basin
- 1 x fully enclosed fibreglass shower unit with glass sliding door
- Electrical - 1 x double power point, 1 x fluoro light, 1 x wired smoke alarm, 1 x exhaust fan, 1 x exterior light, power and light circuit, sub-board with main switch

Options:

- Gable roof upgrade with 2 gutters
- extra windows
- external lights, external power points, generator outlet with change over switch, wall fan
- commercial grade vinyl floor covering
- choice of colours for exterior and interior
- Laundry tub, and tap ware can also be fitted for your laundry needs.

Note: We also build a 6m x 3m building with 2 bathroom Ablution Block, each bathroom being 3m x 3m.