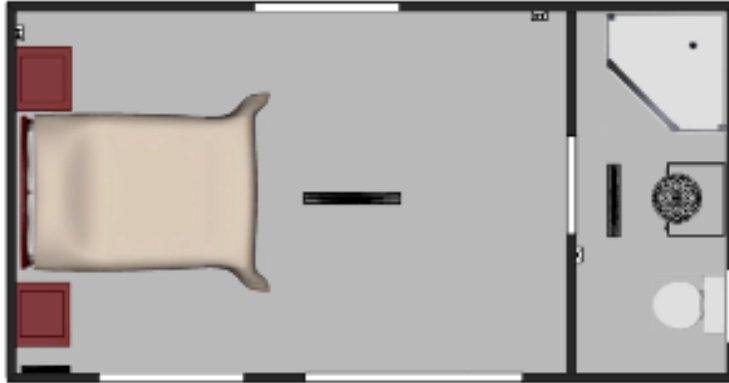




# Transportable Buildings

CHRIS AND JODY GRANT

## 6 x 3m Bedroom with Bathroom Unit



### Inclusions:

- Water proof cement sheet flooring in bathroom
- 1000mm x 1000mm Corner Shower Unit with glass sliding door.
- 2 door vanity unit
- Toilet and cistern
- 1 x interior wall with sliding door
- Commercial grade vinyl floor covering
- 2 x glass sliding window
- 1 x glass sliding door
- 1 x sliding glass window for bathroom
- Electrical-double power points, wired smoke alarm, exhaust fan, 2 x fluoro lights, power and light circuit, sub-board with main switch.

### Options:

- Gable or skillion roof with gutters
- Split air conditioning, cooling only, reverse cycle or inverter system (energy efficient)
- Extra windows or different window sizes
- External lights, external power points, generator with changeover switch
- Fit out with furniture
- Different size and shape shower unit
- Choice of colours for exterior and interior.
- Commercial grade or domestic vinyl floor covering.
- Choice of flyscreen or security screens.

