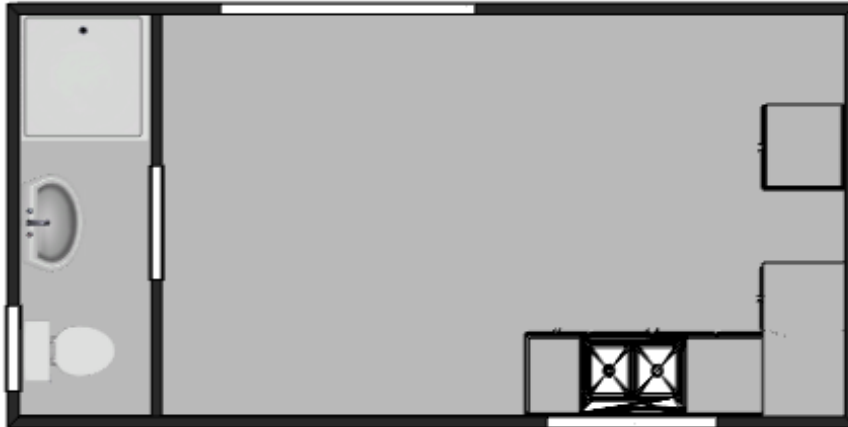




Transportable Buildings

CHRIS AND JODY GRANT

Kitchen and Bathroom Unit 6m x 3m



Inclusions:

- 900 x 900mm fibreglass shower unit with glass sliding door
- 2 door vanity unit
- toilet and cistern
- 1 x interior wall with sliding door
- 2 x glass sliding windows
- 1 x glass sliding door
- L-shape kitchen with draws, cupboards, benches and stove
- commercial grade vinyl flooring
- electrical– 3 double power points, wired smoke alarm, exhaust fan, 2 x fluoro lights, power and light circuit, sub-board with main switch.

Options:

- Gable or skillion roof with gutters
- Split air conditioning, cooling only, reverse cycle, inverter (energy efficient)
- extra windows
- external lights, external power points, generator outlet with changeover switch
- more cupboards
- fit out with furniture
- bigger shower unit
- choice of colours for exterior and interior
- Choice of domestic or commercial grade vinyl.

